

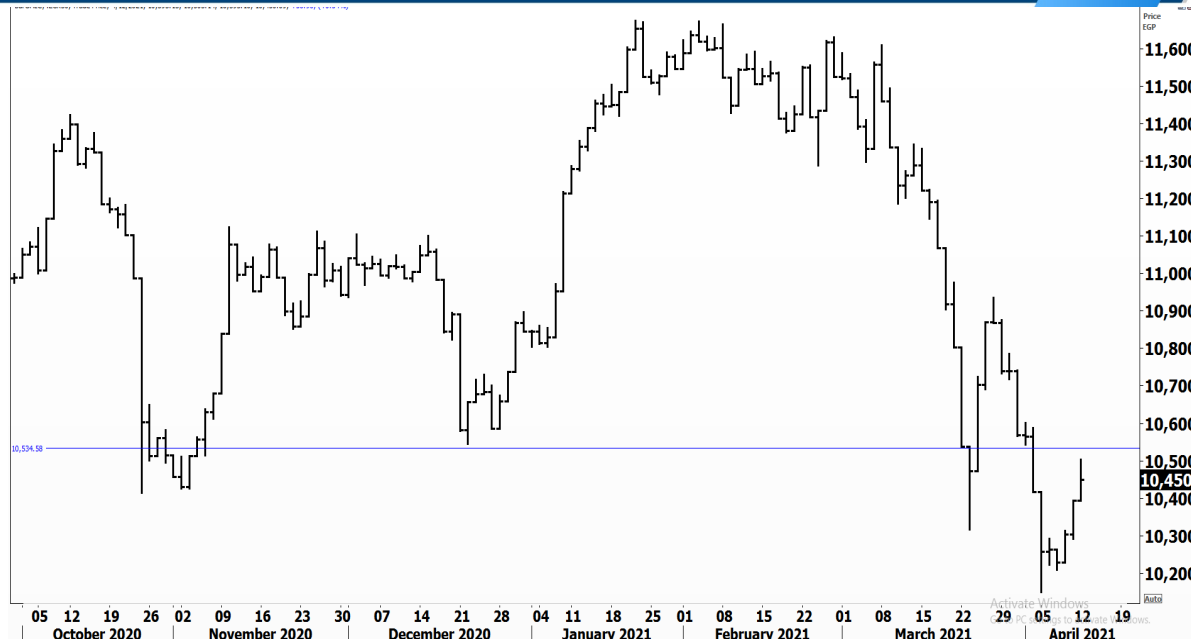


PIONEERSECURITIES

TECH TO THE POINT

13-April- 2021

This report must be read with the disclaimer
on the last page



Last	10,450.09
High Today	10,503.14
Low Today	10,393.10
Volume	M 192.887
First Support	10,300
Second Support	10,000
First Resistance	10,500
Second Resistance	10,900
Stop Loss	10,300
HISTORICAL RETURN %	
1 WEEK	1.88%
1 MONTH	-7.20%
1 QUARTER	-7.35%
1 YEAR	2.08%
YTD	-3.64%

Analysis

The EGX 30 index tested its first resistance that lies at 10,500 and witnessed selling pressure to close the session lower. Based on the current market performance, any decline from here should not be strong; in other words, we should witness a small dip which should be followed by another rise that might break 10,500 to the upside.

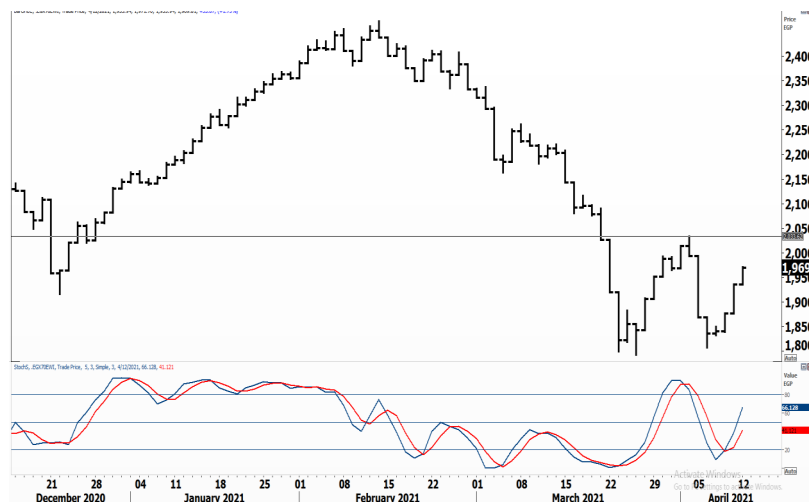
Those, however, who are trading the market, are recommended to reduce exposure near 10,500 and repurchase at the breakout. The index' target, after the 10,500 breakout, will be set around 10,900.

Egyptian Small Caps Index .EGX 70

Analysis

Approaching its resistance that lies at 2,030. As we mentioned before, a break above 2,030 will signal a double bottom formation, which should lead the EGX 70 to higher levels.

Thus, the EGX 70 is expected to meet resistance near these levels. A break above 2,030 will be a signal to repurchase small caps.



Resistance


ESRS  Broke its resistance to the upside, triggering a confirmed buy signal and closed near 10. ESRS is a buy on dips stock and its target lies at 11 initially.

BTFH  Closed at 2.15 after breaking 2.13 to the upside. If BTFH confirms this breakout today, a buy signal will be triggered with a target around 2.4.


Support


Testing


Support


SWDY  The 8.6-8.7 range is the support for SWDY. Those who have positions, however, are recommended to place their stop below 8.5. On the other hand, we will recommend stepping in if the 9.5 level is broken to the upside.

Resistance

AMOC  Buy at a breakout above 2.8. if AMOC breaks above this level today, it will probably reach 3.3. The stock rose sharply yesterday, closing at its limit up.

OFH  The stock needs to break above 0.332 before stepping in. If this resistance is broken upwards, a strong rise will probably follow.

ARCC  Witnessed a strong rise lately from 2.8 to 3.75 in only few days. The stock is currently facing resistance at 3.75. ARCC looks strong but is overextended, this is why we recommend to step in if a correction takes place.

ISMA  Ismailia Poultry is one of the EGX 70 stocks that only suit high risk retail investors. The stock is challenging its minor peak that lies at 5.6. Those who want to take the risk and buy the stock are recommended to step in if this resistance is broken to the upside.

Symbol	S. Description	Last	Buying Area 1	Buying Area 2	Selling Area 1	Selling Area 2	Selling Area 3	Stop Loss
--------	----------------	------	---------------	---------------	----------------	----------------	----------------	-----------

N.B. please note that the levels are too close as these trading opportunities only suit T+0 speculators

The prices that are accompanied by a green arrow in the above table show resistance levels. Thus, a break above these levels will pave the way to achieve one (or all) of the targets.

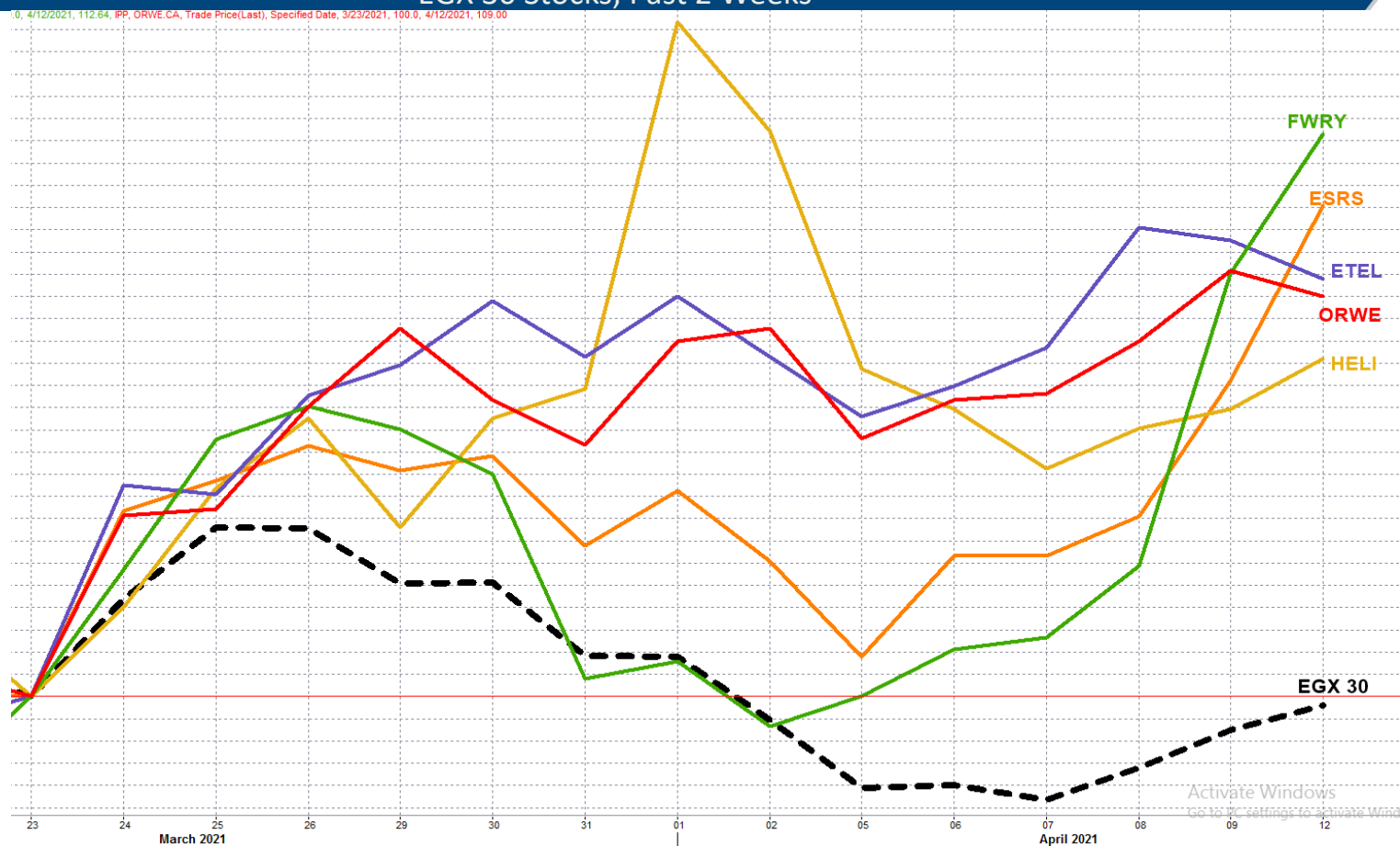
The area between buying area 1 and buying area 2 is a trading area.

Symbol	Hit first Target	Hit Second Target	Hit Third Target	Hit Stop Loss	Triggered Buy	No Action
OFH						(T+1)
PHDC	★					
ATQA						★
MPCO	★					
AIH						(T+1)

Yesterday's T+0/T+1 Trades

Top 5 Performers

EGX 30 Stocks; Past 2 Weeks



Symbol	S. Description	Last	Support 1	Support 2	Resistance 1	Resistance 2	Trend	Recommendation	Stop Loss/ Re-Entry
COMI.CA	COM INTL BK/d	54.8	54	53.6	58	61	↓	P.SELL	61
FWRY.CA	FAWRY FOR BANKING TECHNOLOGY /d	36.51	35.5	34	38.5	40.5	↓	Hold	32.5
EAST.CA	EASTERN CO/d	11.7	11.4	11	12.5	13.5	↓	P.SELL	13.5
EKHO.CA	EGYPT KUWAIT H/d	1.11	\$1.09	\$1.06	\$1.12	\$1.17	↔	Hold	\$1.17
ABUK.CA	ABU QIR FERTILIZERS /d	20.35	19.65	19.35	22	23	↔	Hold	19.35
HRHO.CA	EFG HERMES HOL/d	14.70	14	13.5	14.85	15.3	↓	P.SELL	15.3
TMGH.CA	TALAT MOSTAFA/d	5.99	5.8	5.5	6.2	6.45	↓	P.SELL	6.45
SWDY.CA	ELSWEDY ELECTR/d	8.75	8.7	8.5	9.5	9.75	↓	P.SELL	9.75
CLHO.CA	CLEOPATRA HOSPITAL COMPANY	4.75	4.5	4.29	4.9	5.05	↔	Hold	5.05
ISPH.CA	IBNSINA PHARMA/d	4.15	3.9	3.78	4.4	4.75	↓	P.SELL	4.75
ETEL.CA	TELECOM EGYPT/d	11.3	10.9	10.5	11.4	11.8	↓	P.SELL	11.4
MNHD.CA	NASR CITY HOUS/d	3.79	3.6	3.45	3.9	4.12	↔	Hold	3.45
CIEB.CA	CREDIT AGRICOL/d	22.3	22.5*	21	24.5	25.5	↓	P.SELL	25.5
OCDI.CA	6TH OCT DEV IN/d	16.45	15	14.5	16.8	17.4	↔	Hold	15
SKPC.CA	SIDI KERIR PET/d	10.65	10.3	9.8	10.60*	11.1	↔	Hold	9.8
CICH.CA	CI CAPITAL HOLDING COMPANY/d	3.38	3.25	3	3.7	3.9	↓	P.SELL	3.7
ORWE.CA	ORIENTAL WEAVERS /d	7.5	7.15	6.77	7.5*	7.75	↔	Hold	6.77
EFID.CA	EDITA /d	8.16	8	7.75	8.8	9.25	↓	Hold	8
HELI.CA	HELIOPOLIS/d	4.78	4.5	4.3	5.2	5.5	↓	P.SELL	5.2
PHDC.CA	PALM HILL DEV /d	1.67	1.55	1.45	1.7	1.74	↔	Hold	1.74
AMOC.CA	ALEXANDRIA MINERAL OILS CO/d	2.80	2.65	2.4	2.82	2.95	↓	Hold	2.4
ESRS.CA	EZZ STEEL/d	9.97	8.9	8.5	10.5	11	↓	Hold	8.9
CCAP.CA	CITADEL CAPITA/d	1.229	1.12	1.05	1.22*	1.28	↓	P.SELL	1.28
MTIE.CA	MM GROUP FOR INDUSTRY /d	9.45	8.7	8.3	9.9	10.44	↓	P.SELL	10.44
AUTO.CA	AUTO GHABBOUR /d	3.78	3.4	3.1	4	4.25	↔	Hold	3.4
ORHD.CA	ORASCOM EGYPT/d	5.40	5.05 - 5.00	4.75	5.55	5.8	↔	Hold	5
OIH.CA	ORASCOM INVESTMENT HOLDING /d	0.282	0.25	0.243	0.28*	0.3	↔	Hold	0.3
EMFD.CA	EMAAR MISR DEV/d	2.30	2.25	2.00 - 1.95	2.42	2.53	↔	Hold	2.25
EXPA.CA	EXPORT DEVELOPMENT BANK /d	12.66	11.6	11	13	13.5	↓	Hold	11

Guidelines



Bullish



Bearish



Neutral

Trend: (Upgrade, Downgrade): Change in trend color refers to upgrade or downgrade in the trend relative to the previous trend direction. E.g. change from "↓ Down" to "↔ Flat" is considered an upgrade and vice versa.

Buy: Buy the full position.

P.Buy: Buy portion of a position

Hold: Don't Buy or sell.

P.SELL: Sell portion of a position.

Sell: Sell the full position.

Stop Loss: Completely exit the position (or) Re-entry in cases of Selling.

Disclaimer

This report has been prepared according to the general data available for public, in accordance with the professional standards applied in that career to the best knowledge of the reporter. The recommendations mentioned are a guiding tool representing a professional opinion, and not granting any profits, consequently it is not obligatory for our valued customers and investors. Pioneers Securities©, Egypt shall not be liable for any direct, indirect, incidental, or consequential damages, including limitation losses, lost revenues, or lost profits that may result from these materials. Republishing this report or any of its contents is subject to prior approval; referring to the source is a must. Opinions expressed are subject to change without notice and may differ or be contrary to the opinions or recommendations of Pioneers Securities©, Egypt Research or the opinions expressed by other business areas or groups of Pioneers Securities©, Egypt as a result of depending solely on the historical technical behavior (price and volume).

Technical Analysis Department

Saleh Nasser

Chief Technical Strategist

Ahmed Hassan

Senior Technical Analyst

Dina Fahmy

Senior Technical Analyst

Tips on reading the report

The first page includes an analysis of two major indices in the Egyptian Stock Market; the norm is that we will analyze both the EGX 30 and 70, but sometimes we will compare the EGX 30 to its 50 counterpart if there is important information in this comparison. We also use the Hermes Last Index interchangeably with the EGX 30. The .HRMSL index has an important edge; it uses last prices instead of VWAP. First thing our clients should do is to read the indices analysis carefully to have a clear understanding on our overall view.

The second page includes stocks that broke out beyond their resistance levels, and those that violated their support levels. It also includes stocks that are testing their support levels and those that are testing their resistance. This analysis is important and it is the core of our recommendations. It is important to note though that not all stocks that are testing their support levels are bullish, and not all that are testing their resistance levels are bearish. To make it easier for our clients, we have placed a bull face 🐂 if we consider the stock under study bullish, and a bear face 🐻 if we consider it bearish. We also added a big bullet 🔴 if we are neutral.

It is important to note that you might find a stock that we consider bullish in our analysis (in the breakouts/testing section) but it remains as a hold or partial sell in the table. The conflict here is that the table is more conservative. This will not be an issue with our clients, because our analysis will explain why we are being bullish/bearish on the stock.